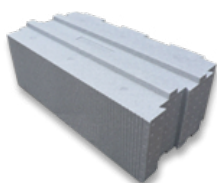
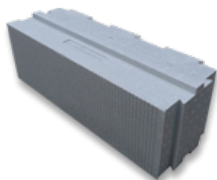
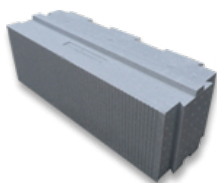
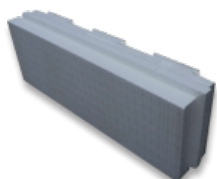
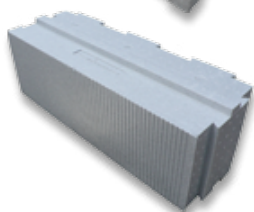


BETON DE LA LOMME

TECHNISCHE FICHE : 3

GLOBAL CONSTRUCT SYSTEEM

BESCHRIJVING



IDEALE COMBINATIE VOOR EEN GEBOUW MET LAAG ENERGIEVERBRUIK

Inertie: BETON bekistingsblok

+

Isolatie: NEOPOR isolatieblok

4 beschikbare isolatiediktes

- Neopor 10 cm $u = 0,27 \text{ W/m}^2\text{K}$
- Neopor 20 cm $u = 0,14 \text{ W/m}^2\text{K}$
- Neopor 25 cm $u = 0,12 \text{ W/m}^2\text{K}$
- Neopor 30 cm $u = 0,10 \text{ W/m}^2\text{K}$