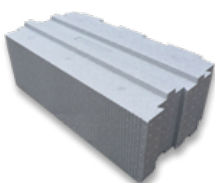
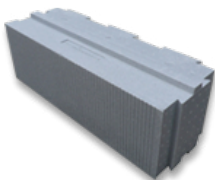
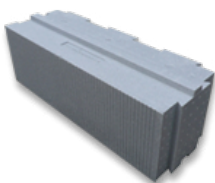
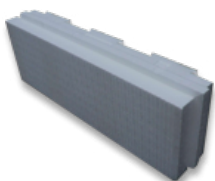
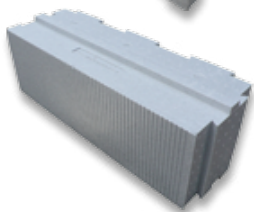


BETON DE LA LOMME

FICHE TECH : 3

SYSTÈME GLOBAL CONSTRUCT

DESCRIPTION



LA COMBINAISON IDÉALE POUR UNE CONSTRUCTION BASSE ÉNERGIE

Inertie: Blocs de coffrage en BETON

+

Isolation: Blocs isolant en NEOPOR

4 épaisseurs de blocs isolants

- Neopor 10 cm $u = 0,27 \text{ W/m}^2\text{K}$
- Neopor 20 cm $u = 0,14 \text{ W/m}^2\text{K}$
- Neopor 25 cm $u = 0,12 \text{ W/m}^2\text{K}$
- Neopor 30 cm $u = 0,10 \text{ W/m}^2\text{K}$